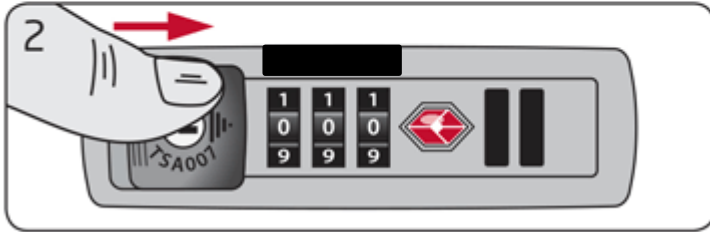
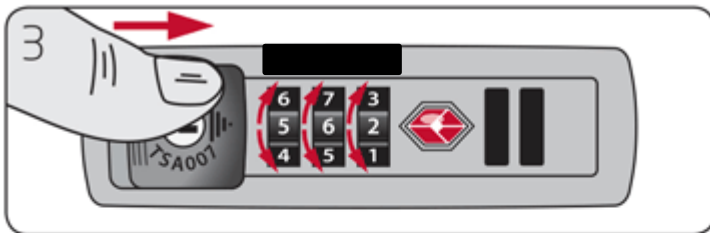


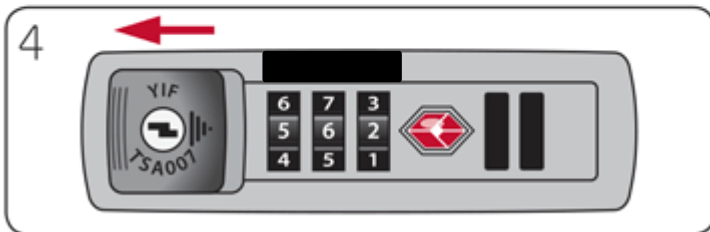
SET CODE TO 000



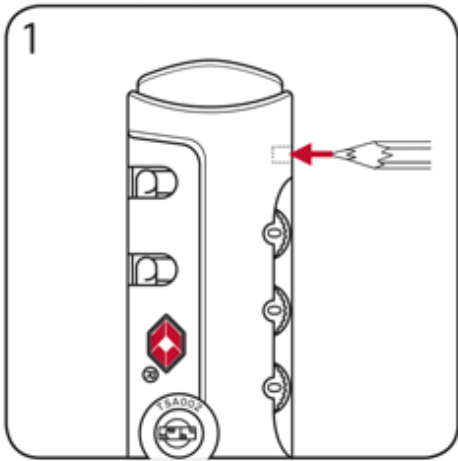
PUSH BUTTON ACROSS & HOLD



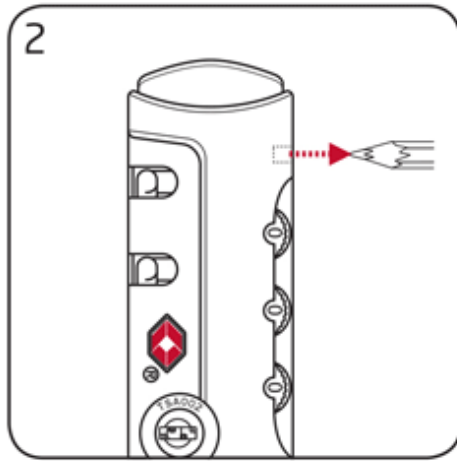
CONTINUE HOLDING BUTTON & SET CHOSEN CODE



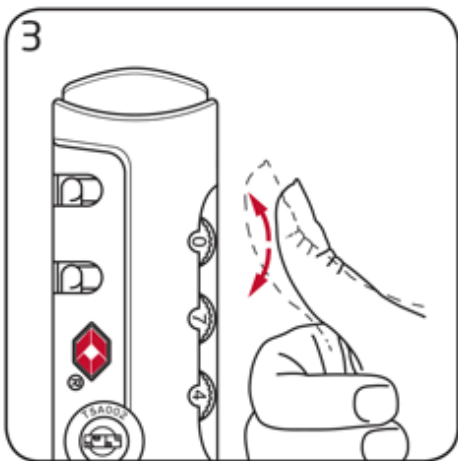
RELEASE BUTTON



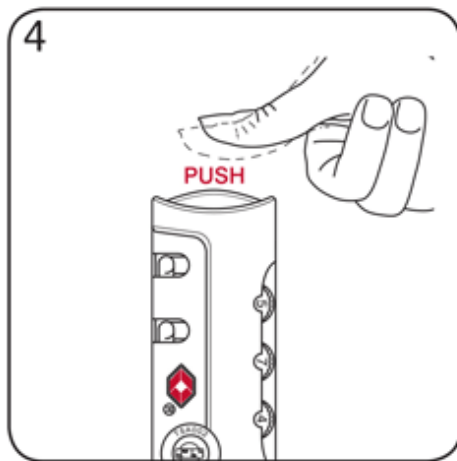
SET LOCK TO 000 & PUSH IN
BUTTON WITH PEN



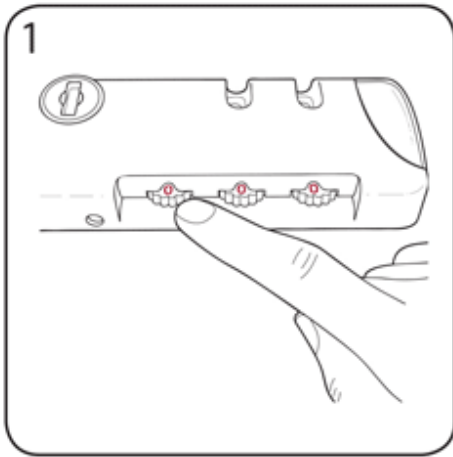
BUTTON AUTOMATICALLY STAYS
PUSHED IN



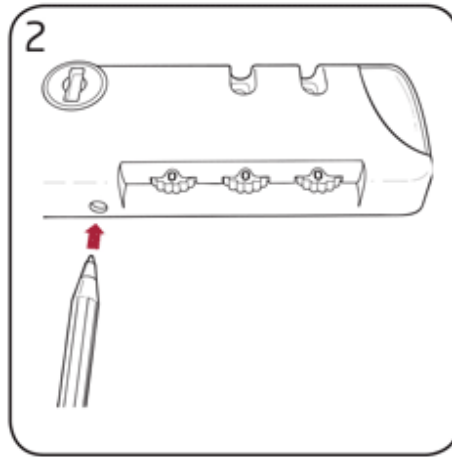
SET CHOSEN CODE



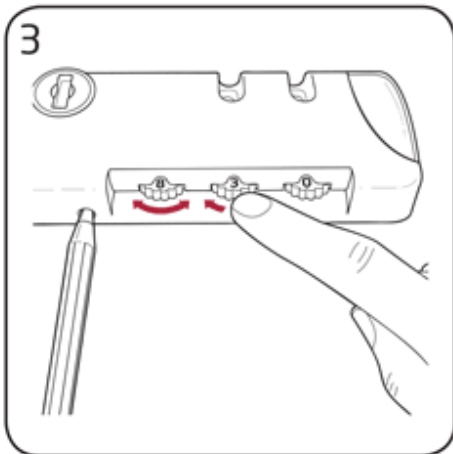
RELEASE BY PRESSING TOP
BUTTON



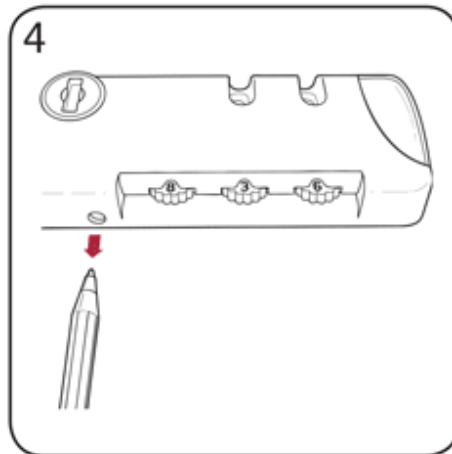
1
SET LOCK TO 000



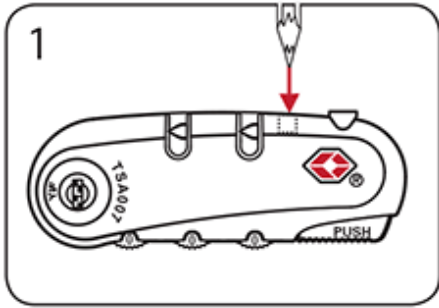
2
USE A PEN TO HOLD IN BUTTON



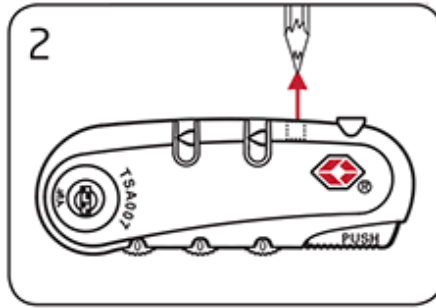
3
CONTINUE HOLDING BUTTON &
SET CHOSEN CODE



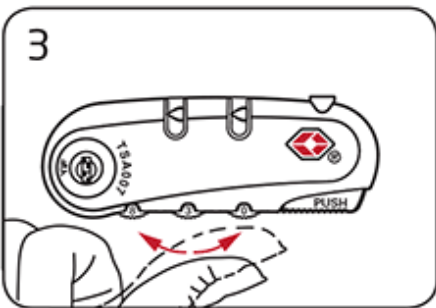
4
RELEASE PEN



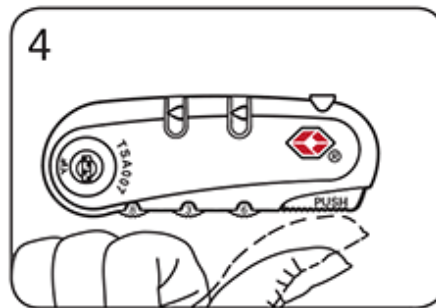
1
SET LOCK TO 000 & PUSH
IN BUTTON WITH PEN



2
BUTTON AUTOMATICALLY
STAYS PUSHED IN



3
SET CHOSEN CODE



4
RELEASE BY PRESSING
SIDE BUTTON

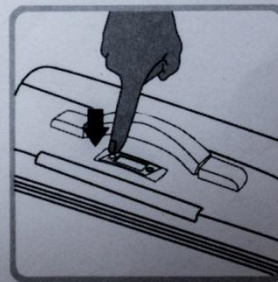
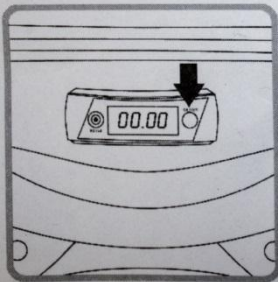


Set code to 000
Push button across & hold
Continue holding button & set
chosen code
Release button



4. OPERATING INSTRUCTIONS

- 4.1 Place the luggage on flat ground, making sure the upper handle is free of load. Power on the scale unit by pressing the button marked "ON/OFF".
- 4.2 Keep the luggage on the ground, wait for the zero to be displayed on the LCD.
- 4.3 Lift the luggage by the upper handle, and hold still for several seconds.
- 4.4 The total weight of the luggage will display on the LCD display.
- 4.5 Power off the scale by pressing the button marked "ON/OFF".



- 4.6 Press the button marked "KG/LB", the LCD display will toggle between KG/LB.